

TECHNICAL CATALOGUE

BUILD-IN VALVES AND SUPPLY STOPS



ITAP SpA, founded in Lumezzane (Brescia) in 1972, is currently one of the leading production companies in Italy of valves, fittings and distribution manifolds for plumbing and heating systems. Thanks to fully automated production processes, with 72 tooling machines and 51 assembly lines, we are able to produce 200,000 pieces per day. Our innate pursuit for innovation and observance of technical regulations is supported by the company certification ISO 9001: 2008. The company has always considered its focus on quality as the main tool to obtain significant business results: today ITAP SpA is proud to offer products bearing the approval of numerous international certifying bodies.



BUILD-IN
VALVES AND
SUPPLY STOPS



CHROME-PLATED BIBCOCKS

340

BUILD-IN VALVE
WITH BLIND CAP

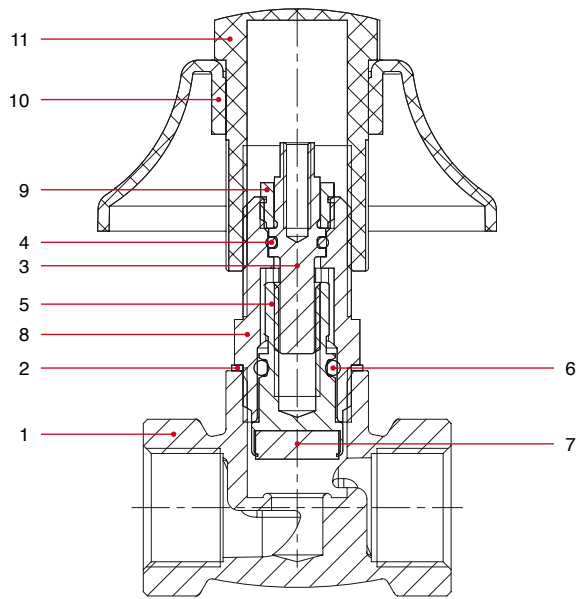


SIZE	PRESSURE	CODE	PACKING
1/2" (DN 15)	20bar/290psi	3400012	6/72
3/4" (DN 20)	15bar/217,5psi	3400034	6/72

TECHNICAL SPECIFICATIONS

Female/female threads.
Body in brass.
Cover plate and cap in chrome-plated ABS.
Minimum and maximum working temperatures:
0°C, 110°C in absence of steam.
Threads ISO228
(equivalent to DIN EN ISO 228 and BS EN ISO 228).

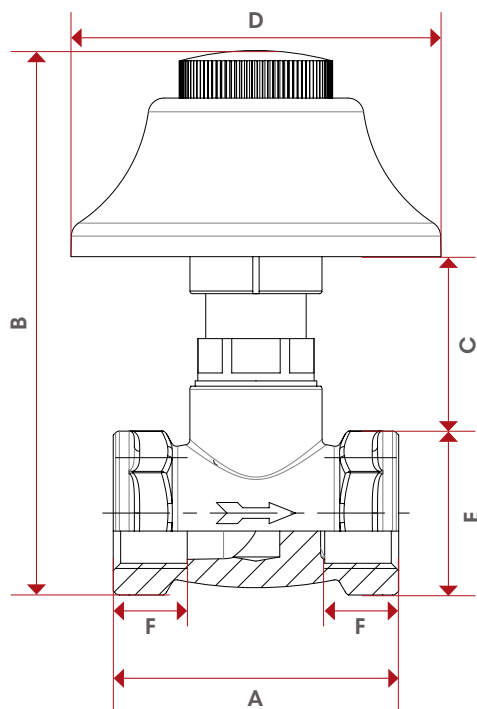
MATERIALS



POS.	DESCRIPTION	N.	MATERIAL
1	Body	1	Brass CW617N
2	Washer	1	Aluminium
3	Stem	1	Brass CW614N
4	O-Ring	1	NBR
5	Screw	1	Brass CW614N
6	O-Ring	1	NBR
7	Gasket	1	NBR
8	Bonnet body	1	Brass CW614N
9	Nut	1	Brass CW614N
10	Cover-plate	1	ABS
11	Cap	1	ABS



OVERALL
DIMENSIONS



	1/2"	3/4"
DN	15	20
A	54	59,5
B	103	107,5
C	33	33
D	70	70
E	31	35,5
F	14	14
Kg/cm ² bar	20	15
LBS - psi	290	217,5

CERTIFICATIONS



345

BUILD-IN VALVE
WITH HANDLE



SIZE	PRESSURE	CODE	PACKING
1/2" (DN 15)	20bar/290psi	3450012	4/76
3/4" (DN 20)	15bar/217,5psi	3450034	4/48

TECHNICAL SPECIFICATIONS

Female/female threads.

Body in brass.

Cover plate and handle in chrome-plated ABS.

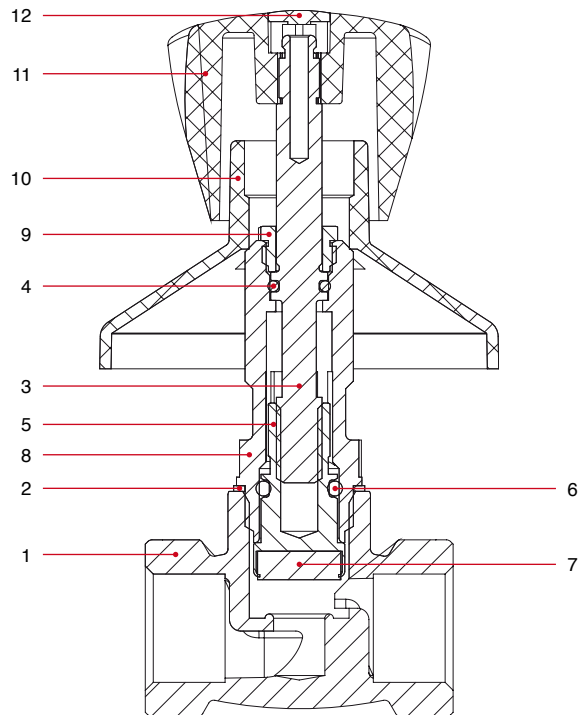
Minimum and maximum working temperatures:

0°C, 110°C in absence of steam.

Threads ISO228

(equivalent to DIN EN ISO 228 and BS EN ISO 228).

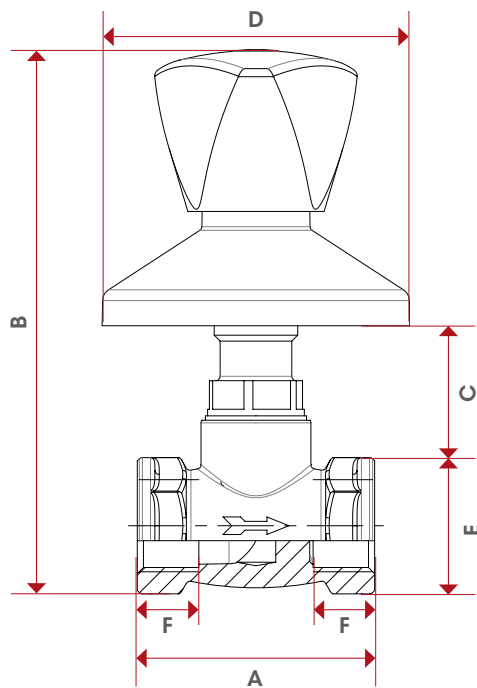
MATERIALS



POS.	DESCRIPTION	N.	MATERIAL
1	Body	1	Brass CW617N
2	Washer	1	Aluminium
3	Stem	1	Brass CW614N
4	O-Ring	1	NBR
5	Screw	1	Brass CW614N
6	O-Ring	1	NBR
7	Gasket	1	NBR
8	Bonnet body	1	Brass CW614N
9	Nut	1	Brass CW614N
10	Cover-plate	1	ABS
11	Handle	1	ABS
12	Clip	1	ABS



OVERALL DIMENSIONS



	1/2"	3/4"
DN	15	20
A	54	59,5
B	124	127,5
C	30	30
D	70	70
E	31	35,5
F	14	14
Kg/cm ² bar	20	15
LBS - psi	290	217,5

CERTIFICATIONS



136

BUILD-IN VALVE WITH BLIND CAP



SIZE	PRESSURE	CODE	PACKING
1/2" (DN 15)	30bar/435psi	1360012	8/56
3/4" (DN 20)	25bar/362,5psi	1360034	5/35

TECHNICAL SPECIFICATIONS

Full flow. Female/female threads.

Body in brass.

Cover plate and Cap in chrome-plated brass.

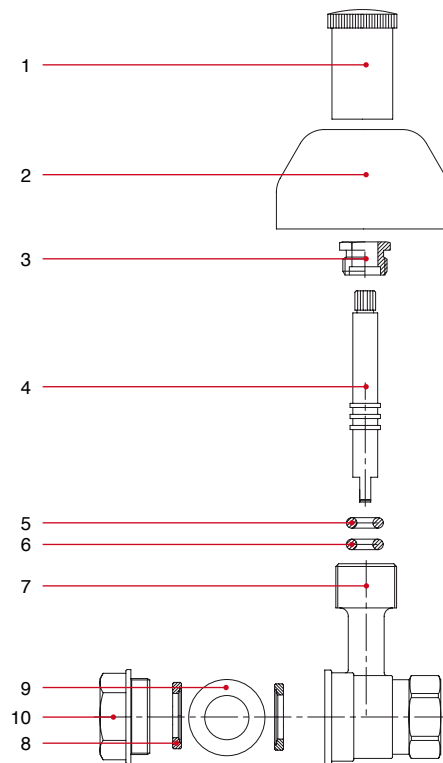
Minimum and maximum working temperatures:

0°C, 110°C in absence of steam.

Threads ISO228

(equivalent to DIN EN ISO 228 e BS EN ISO 228).

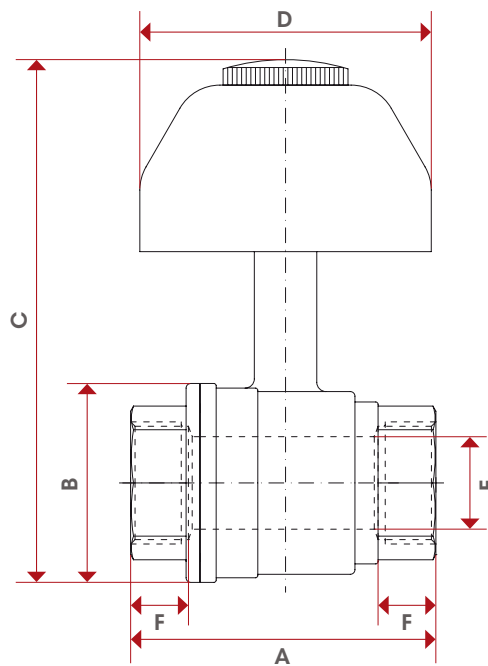
MATERIALS



POS.	DESCRIPTION	N.	MATERIAL
1	Cap	1	Chrome-plated brass CW617N
2	Cover-plate	1	Chrome-plated brass CW508L
3	Packing gland	1	Brass CW614N
4	Stem	1	Brass CW614N
5	O-Ring	1	NBR
6	O-Ring	1	NBR
7	Body	1	Brass CW617N
8	Seat	2	P.T.F.E.
9	Ball	1	Chrome-plated brass CW614N
10	End adapter	1	Brass CW617N



OVERALL DIMENSIONS



	1/2"	3/4"
DN	15	20
A	56	67
B	34	43
C	109	118
D	63	63
E	15	20
F	12	14
Kg/cm ² bar	30	25
LBS - psi	435	362,5

CERTIFICATIONS



138

BUILD-IN VALVE WITH HANDLE

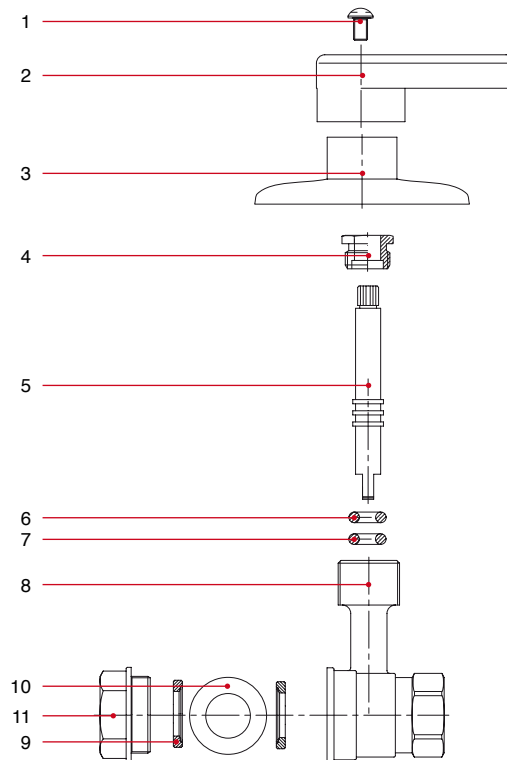


SIZE	PRESSURE	CODE	PACKING
1/2" (DN 15)	30bar/435psi	1380012	8/56
3/4" (DN 20)	25bar/362,5psi	1380034	5/35
1" (DN 25)	25bar/362,5psi	1380100	4/24

TECHNICAL SPECIFICATIONS

Full flow.
 Female/female threads.
 Body in brass. Cover plate in stainless steel.
 Lever handle in chrome-plated brass.
 Minimum and maximum working temperatures:
 0°C, 110°C in absence of steam.
 Threads ISO228
 (equivalent to DIN EN ISO 228 and BS EN ISO 228).

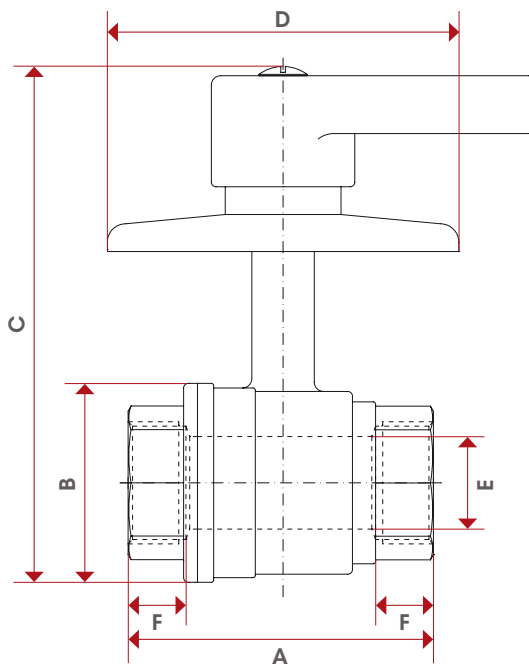
MATERIALS



POS.	DESCRIPTION	N.	MATERIAL
1	Screw	1	Zinc-plated steel Fe CB4
2	Lever handle	1	Chrome-plated brass CW617N
3	Cover-plate	1	Stainless steel AISI 430BA
4	Packing gland	1	Brass CW614N
5	Stem	1	Brass CW614N
6	O-Ring	1	NBR
7	O-Ring	1	NBR
8	Body	1	Brass CW617N
9	Seat	2	P.T.F.E.
10	Ball	1	Chrome-plated brass CW614N
11	End adapter	1	Brass CW617N



OVERALL DIMENSIONS



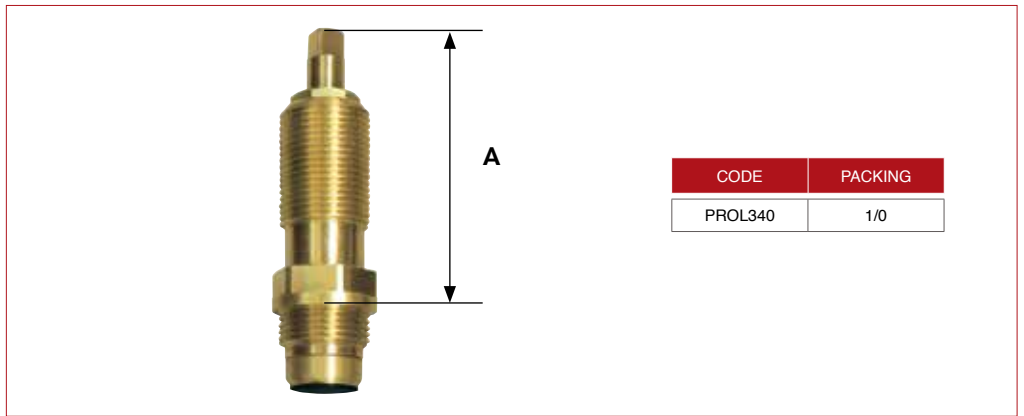
	1/2"	3/4"	1"
DN	15	20	25
A	58	70	82
B	34	43	52
C	100	111	116
D	100	100	100
E	15	20	25
F	14	15	18
Kg/cm ² bar	30	25	25
LBS - psi	435	362,5	362,5

CERTIFICATIONS



PROL340

SPACER



CODE	PACKING
PROL340	1/0

TECHNICAL SPECIFICATIONS

Thread: 19x19Fx1"

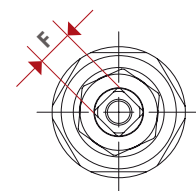
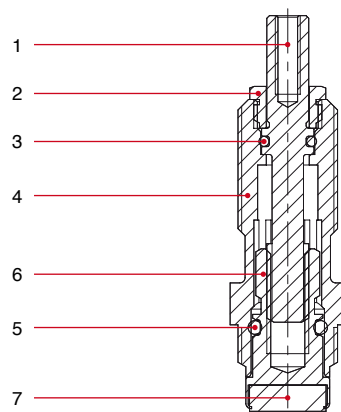
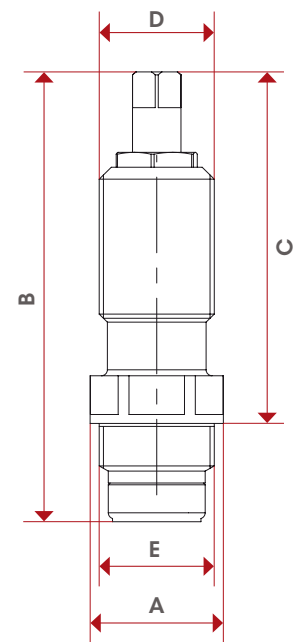
Length A: 59mm.

Suitable for art. 340

OVERALL DIMENSIONS

MATERIALS

	mm
A	22
B	75,5
C	59
D	W19x19Fx1"
E	W19x19Fx1"
F	6

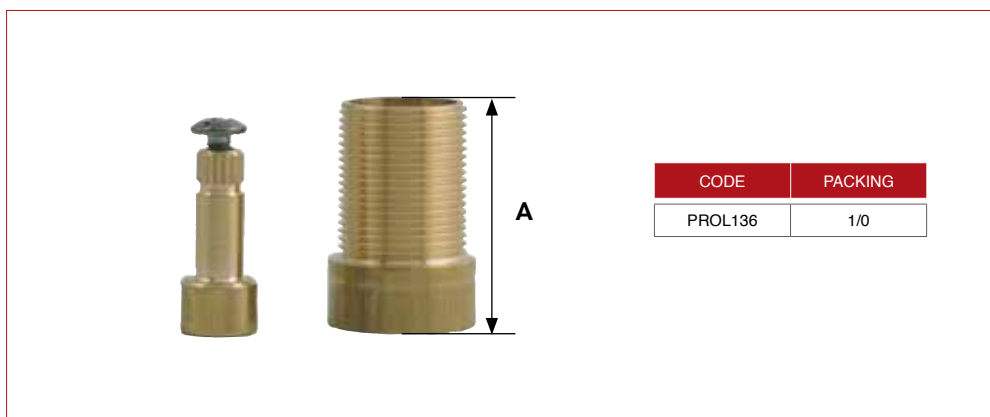


POS.	DESCRIPTION	N.	MATERIAL
1	Stem	1	Brass CW614N
2	Still aucion	1	Brass CW614N
3	O-ring	1	NBR
4	Body	1	Brass CW614N
5	O-ring	1	NBR
6	Screw	1	Brass CW614N
7	Gasket	1	NBR



PROL136

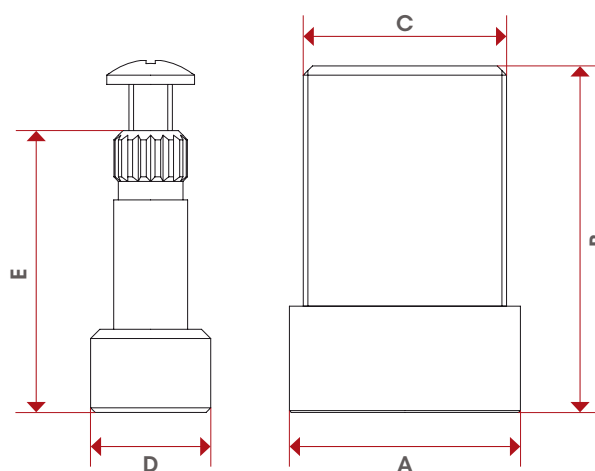
SPACER



TECHNICAL SPECIFICATIONS

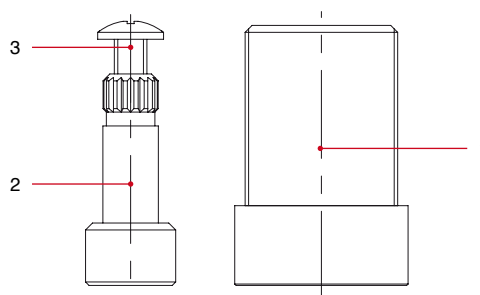
Thread: 22x19Fx1".
 Length A: 37,5mm.
 Suitable for art. 136 and 138.

OVERALL DIMENSIONS



	mm
A	25
B	37,5
C	W22x19Fx1"
D	13
E	30,5

MATERIALS



POS.	DESCRIPTION	N.	MATERIAL
1	Body	1	Brass CW614N
2	Extension for stem	1	Brass CW614N
3	Screw	1	Brass CW508L

346

SUPPLY STOP



SIZE	PRESSURE	CODE	PACKING
1/2" (DN 15)	8bar/116psi	1460012	10/160

TECHNICAL SPECIFICATIONS

Available size 1/2"x1/2".

Male thread.

Body in chrome-plated brass.

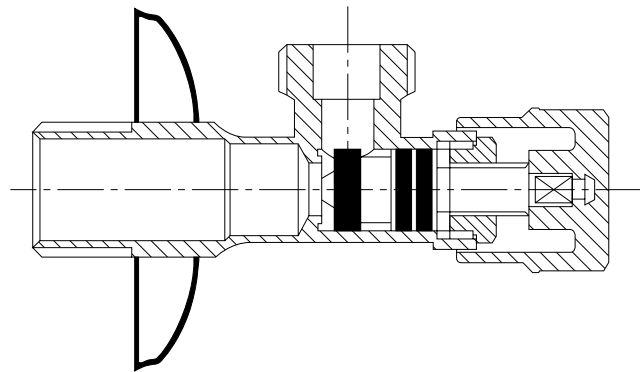
Cover plate in stainless steel.

Minimum and maximum working temperatures: 0°C, 80°C.

Threads ISO228

(equivalent to DIN EN ISO 228 and BS EN ISO 228).

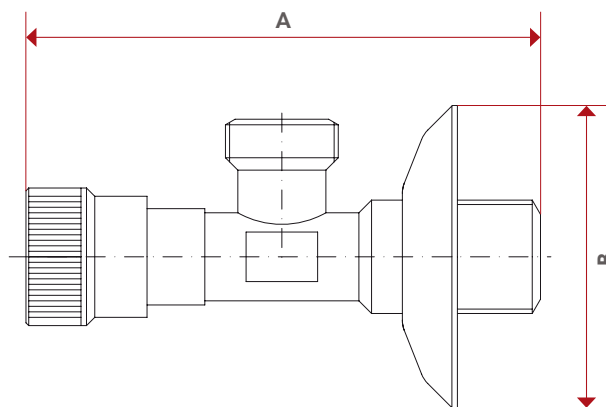
MATERIALS



POS.	DESCRIPTION	N.	MATERIAL
-	Body	-	Chrome-plated brass CW617N
-	Washers	-	NBR
-	Ring	-	P.T.F.E.
-	Handle	-	ABS
-	Cover plate	-	Stainless steel AISI 430



OVERALL
DIMENSIONS



	1/2"
A	90
B	55
Kg/cm ² bar	8
LBS - psi	116

CERTIFICATIONS



348 348SD

SUPPLY STOP
WITH NUT
AND WASHER



SIZE	PRESSURE	CODE	PACKING
1/2" (DN 15)	8bar/116psi	3480012	10/160



SIZE	PRESSURE	CODE	PACKING
1/2" (DN 15)	8bar/116psi	3480012SD	10/240

TECHNICAL SPECIFICATIONS

Available size 1/2"x mm.10.

Male thread.

Body in chrome-plated brass.

Cover plate in stainless steel.

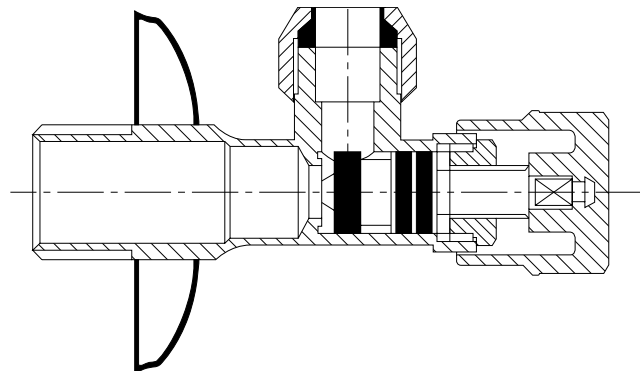
Minimum and maximum working temperatures: 0°C, 80°C.

Threads ISO228

(equivalent to DIN EN ISO 228 and BS EN ISO 228).

Art. 348SD without nut 1/2"x3/8"

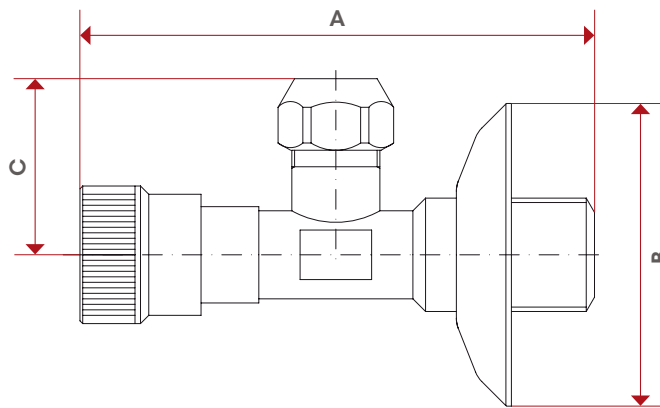
MATERIALS



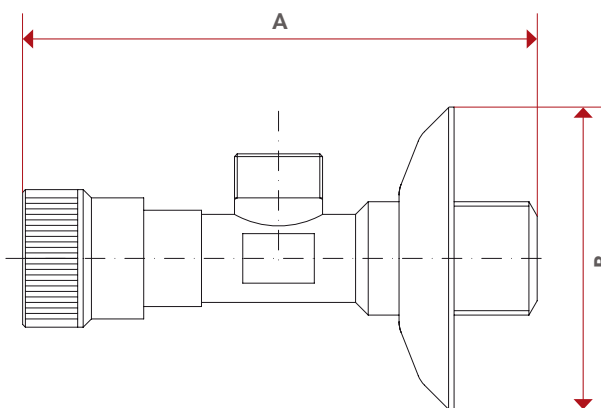
POS.	DESCRIPTION	N.	MATERIAL
-	Body	-	Chrome-plated brass CW617N
-	Washers	-	NBR
-	Ring	-	P.T.F.E.
-	Handle	-	ABS
-	Cover plate	-	Stainless steel AISI 430



OVERALL DIMENSIONS



	1/2"
A	90
B	55
C	31
Kg/cm ² bar	8
LBS - psi	116



	1/2"
A	90
B	55
Kg/cm ² bar	8
LBS - psi	116

CERTIFICATIONS



385

BALL SUPPLY STOP WITH STRAINER

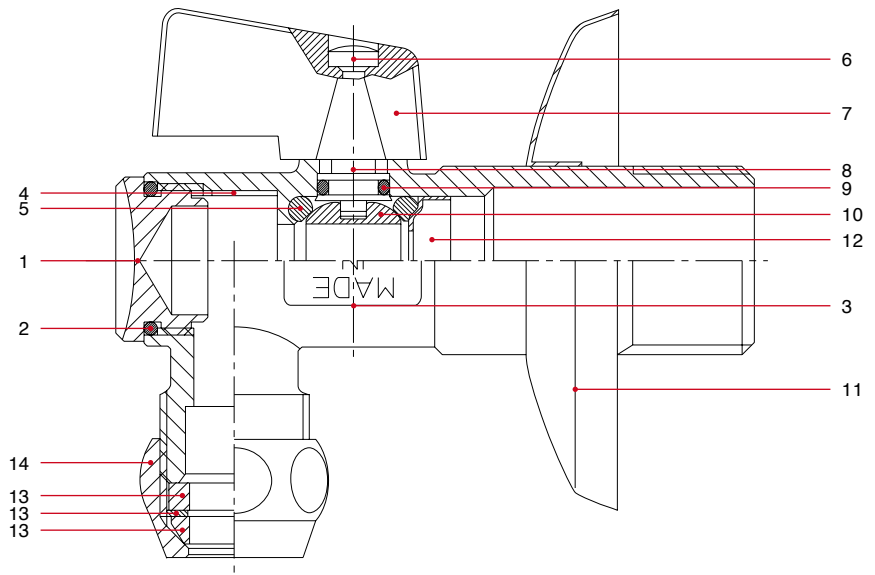


SIZE	PRESSURE	CODE	PACKING
1/2" (DN 15)	8bar/116psi	3850012	10/130

TECHNICAL SPECIFICATIONS

Available size 1/2"x mm.10.
 Male thread.
 Body in chrome-plated brass.
 Cover plate in stainless steel.
 Built-in strainer in stainless steel.
 Minimum and maximum working temperatures: 0°C, 80°C.
 Threads ISO228 (equivalent to DIN EN ISO 228 and BS EN ISO 228).

MATERIALS



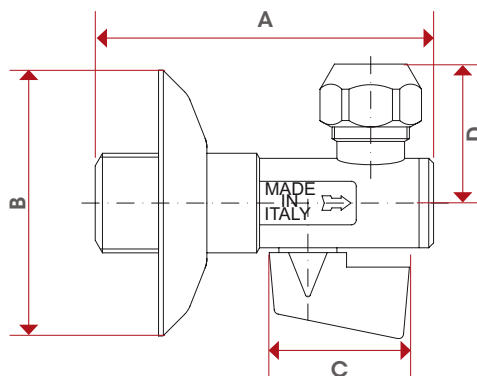
POS.	DESCRIPTION	N.	MATERIAL
1	Cap	1	Chrome-plated brass CW614N
2	O-Ring	1	NBR
3	Body	1	Chrome-plated brass CW617N
4	Strainer	1	Stainless steel AISI 304
5	O-Ring	2	NBR
6	Screw	1	Zinc-plated steel
7	Lever handle	1	ABS
8	Stem	1	Brass CW614N
9	O-Ring	1	NBR
10	Ball	1	Chrome-plated brass CW614N
11	Cover-plate	1	Stainless steel AISI 430
12	Pressure ring	1	Brass CW614N
13	3-pieces ogive	1	-
14	Nut	1	Chrome-plated brass CW614N





TEC

OVERALL DIMENSIONS



	1/2"
A	70
B	55
C	30
D	32.7
Kg/cm ² bar	8
LBS - psi	116

CERTIFICATIONS



ART. 385

386

BALL SUPPLY STOP WITH ARTICULATED CONNECTION

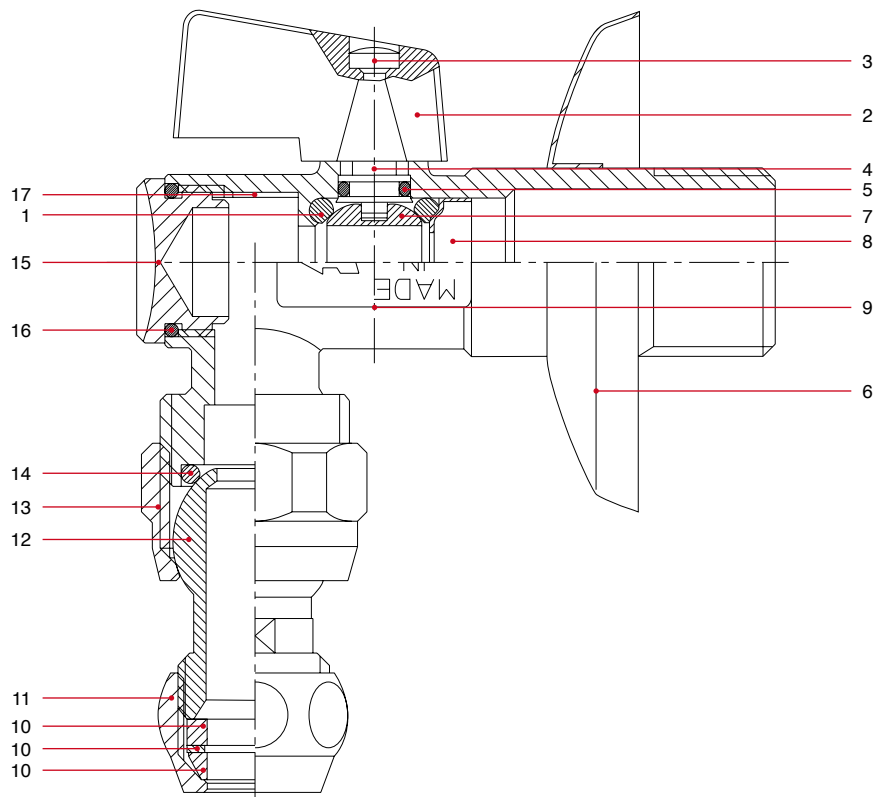


SIZE	PRESSURE	CODE	PACKING
1/2" (DN 15)	8bar/116psi	3860012	10/130

TECHNICAL SPECIFICATIONS

- Available size 1/2"x mm.10.
- Male thread.
- Body in chrome-plated brass.
- Cover plate in stainless steel.
- Built-in strainer in stainless steel.
- Minimum and maximum working temperatures: 0°C, 80°C.
- Threads ISO228 (equivalent to DIN EN ISO 228 and BS EN ISO 228).

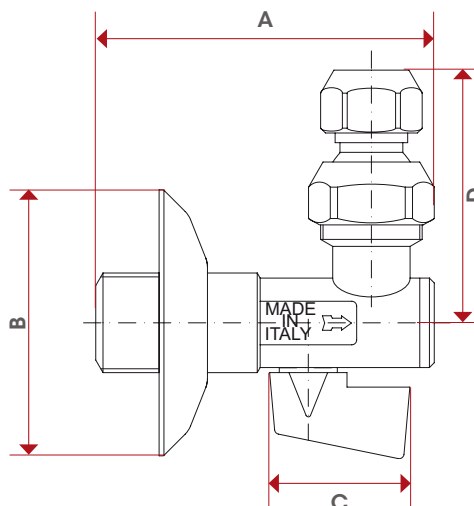
MATERIALS



MATERIALS

POS.	DESCRIPTION	N.	MATERIAL
1	O-Ring	2	NBR
2	Lever handle	1	ABS
3	Screw	1	Zinc-plated steel
4	Stem	1	Brass CW614N
5	O-Ring	1	NBR
6	Cover-plate	1	Stainless steel AISI 430
7	Ball	1	Chrome-plated brass CW614N
8	Pressure ring	1	Brass CW614N
9	Body	1	Chrome-plated brass CW614N
10	3-pieces ogive	1	-
11	Nut	1	Chrome-plated brass CW614N
12	Junction	1	Chrome-plated brass CW614N
13	Nut	1	Chrome-plated brass CW614N
14	O-Ring	1	NBR
15	Cap	1	Chrome-plated brass CW614N
16	O-Ring	1	NBR
17	Strainer	1	Stainless steel AISI 304

OVERALL DIMENSIONS



	1/2"
A	70
B	55
C	30
D	57,5
Kg/cm ² bar	8
LBS - psi	116

CERTIFICATIONS



387

SUPPLY STOP AND WASHING MACHINE VALVE

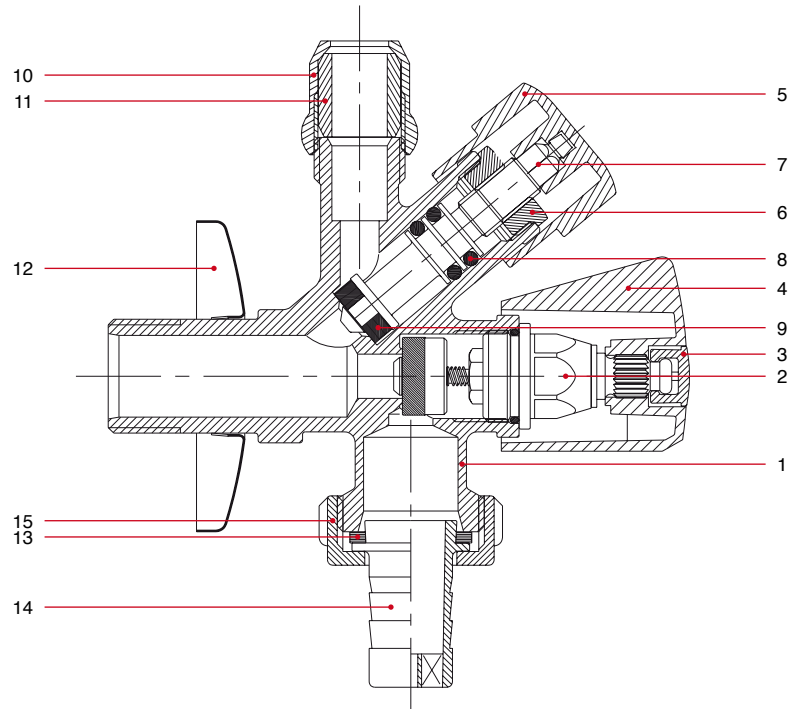


SIZE	PRESSURE	CODE	PACKING
1/2" (DN 15)	8bar/116psi	3870012	1/75

TECHNICAL SPECIFICATIONS

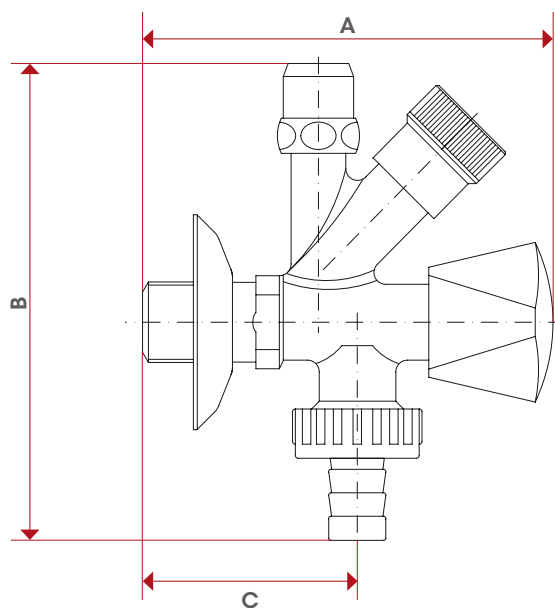
Male thread.
 Body in chrome-plated brass.
 Cover plate in stainless steel.
 Minimum and maximum working temperature: 0°C, 80°C.
 Threads ISO228 (equivalent to DIN EN ISO 228 and BS EN ISO 228)

MATERIALS



POS.	DESCRIPTION	N.	MATERIAL
1	Body	1	Chrome-plated brass CW617N
2	Bonnet	1	Brass CW614N
3	Cap	1	POM
4	Handle	1	ABS
5	Handle	1	ABS
6	Nut	1	Brass CW614N
7	Stem	1	Brass CW614N
8	O-Ring	2	NBR
9	Washer	1	NBR
10	Nut	1	Chrome-plated brass CW614N
11	Olive	1	Nylon
12	Cover-plate	1	Stainless steel
13	Washer	1	NBR
14	Hose connection	1	Nylon
15	Nut	1	Nylon



OVERALL
 DIMENSIONS


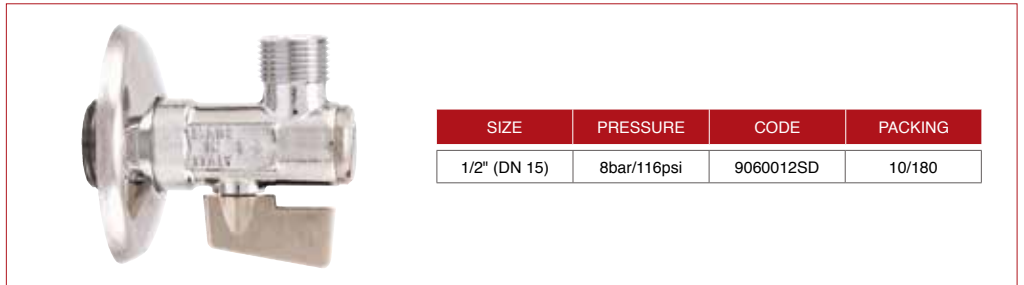
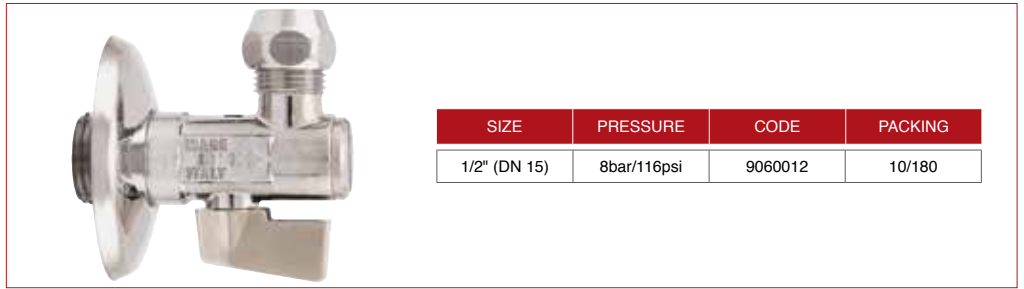
	1/2"
A	105
B	120
C	55
Kg/cm ² bar	8
LBS - psi	116

CERTIFICATIONS



906 906SD

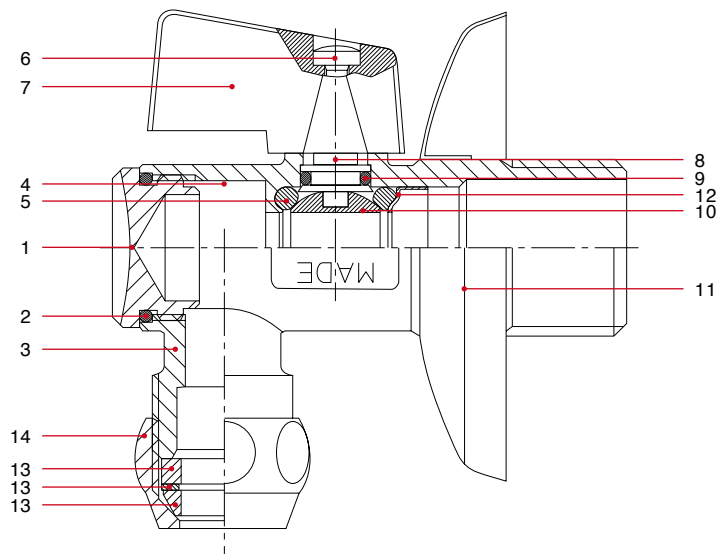
BALL SUPPLY STOP
WITH STRAINER



TECHNICAL SPECIFICATIONS

Available size 1/2"x mm.10.
 Male thread. Body in chrome-plated brass.
 Cover plate in stainless steel. Built-in strainer in stainless steel.
 Minimum and maximum working temperatures: 0°C, 80°C.
 Threads ISO228 (equivalent to DIN EN ISO 228 and BS EN ISO 228).
 Art. 906SD without nut 1/2"x3/8"

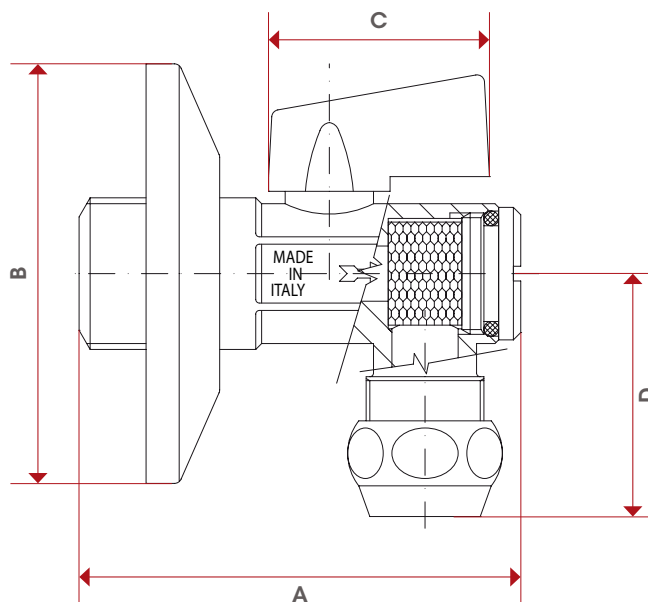
MATERIALS



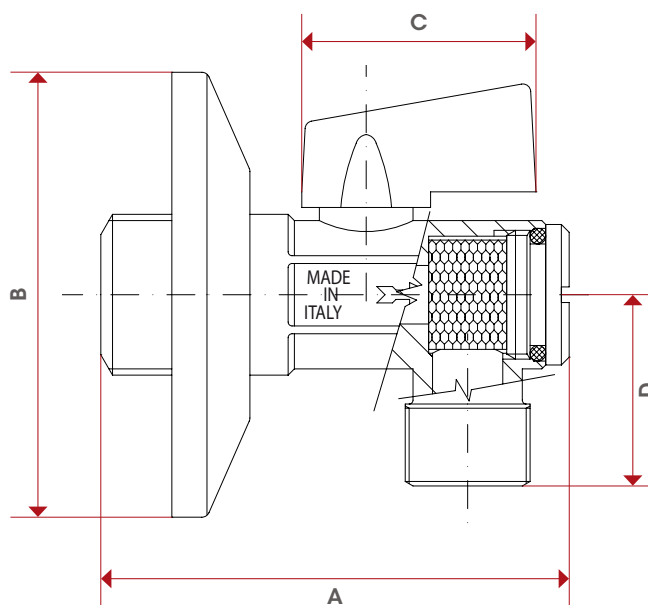
POS.	DESCRIPTION	N.	MATERIAL
1	Plug	1	Chrome-plated brass CW614N
2	O-Ring	1	NBR
3	Body	1	Chrome-plated brass CW614N
4	Strainer	1	Stainless steel AISI 304
5	O-Ring	2	NBR
6	Screw	1	Cir UNI947-72
7	Handle	1	Zamak
8	Stem	1	Brass CW614N
9	O-Ring	1	NBR
10	Ball	1	Chrome-plated brass CW614N
11	Rosette	1	Stainless steel AISI 430
12	Shutoff valve	1	Brass CW614N
13	Olive	1	-
14	Nut	1	Chrome-plated brass CW614N



OVERALL DIMENSIONS



	1/2"
DN	15
A	60
B	57
C	30
D	33
Kg/cm ² bar	8
LBS - psi	116



	1/2"
A	60
B	57
C	30
D	33
Kg/cm ² bar	8
LBS - psi	116

CERTIFICATIONS



375

TOILET TANK VALVE



SIZE	PRESSURE	CODE	PACKING
3/8" (DN 10)	16bar/232psi	3750038	12/120

TECHNICAL SPECIFICATIONS

Male/female threads.

Body in nickel-plated brass.

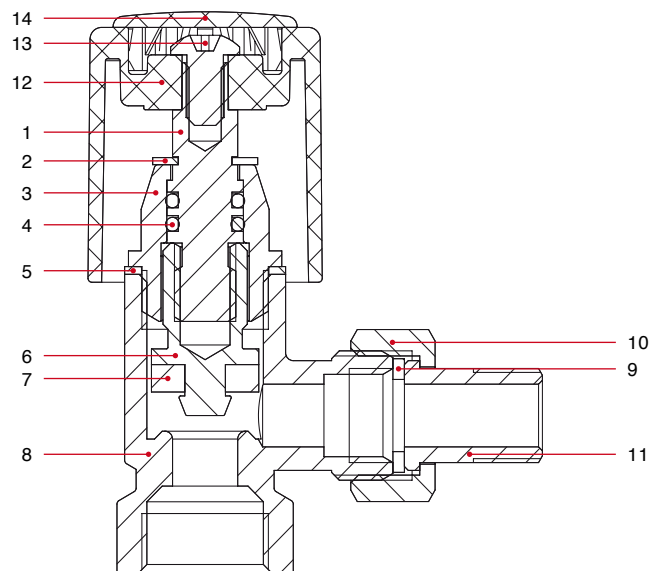
Minimum and maximum working temperatures: 0°C, 80°C.

Female threads ISO228

(equivalent to DIN EN ISO 228 and BS EN ISO 228).

Male thread W12x19.

MATERIALS



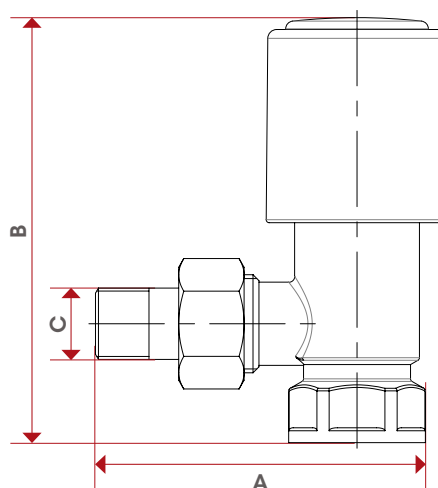
POS.	DESCRIPTION	N.	MATERIAL
1	Pin	1	Brass CW614N
2	Ring	1	Stainles steel AISI 302
3	Plug	1	Brass CW614N
4	O-Ring	2	NBR
5	Washer	1	Aluminium
6	Screw	1	Brass CW614N
7	Washer	1	NBR
8	Body	1	Nickel-plated brass CW617N
9	Flat washer	1	Fiber
10	Nut	1	Nickel-plated brass CW614N
11	Shank	1	Nickel-plated brass CW614N
12	Handle	1	ABS
13	Screw	1	Steel Fe
14	Clip	1	ABS





TEC

OVERALL DIMENSIONS



	3/8"
DN	10
A	59,3
B	71,5
C	W12x19
Kg/cm ² bar	16
LBS - psi	232

CERTIFICATIONS



ART. 375

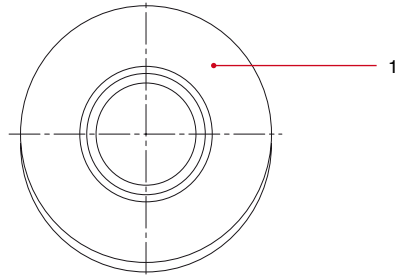
285

STAINLESS STEEL ROSETTE



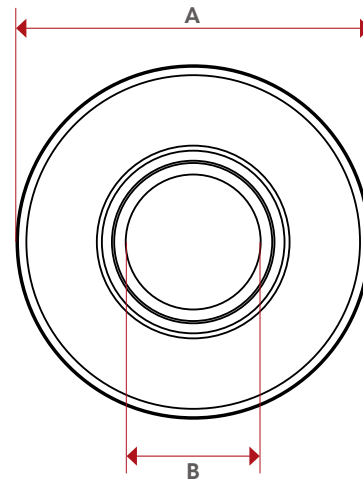
SIZE	CODE	PACKING
3/8" (DN 10)	2850038	100/2500
1/2" (DN 15)	2850012	100/4000

MATERIALS



POS.	DESCRIPTION	N.	MATERIAL
1	Cover-plate	1	Stainless stell

OVERALL DIMENSIONS



	3/8"	1/2"
DN	10	15
A	55	55
B	18,7	21,1

CERTIFICATIONS





NOTES

Horizontal dashed lines for taking notes.



ITAP S.p.A.
Via Ruca 19
25065 Lumezzane
Brescia (ITALIA)
Tel 030 89270
Fax 030 8921990
www.itap.it
info@itap.it