

TECHNICAL CATALOGUE

VX-N FITTINGS FOR POLYETHYLENE PIPES



ITAP SpA, founded in Lumezzane (Brescia) in 1972, is currently one of the leading production companies in Italy of valves, fittings and distribution manifolds for plumbing and heating systems. Thanks to fully automated production processes, with 72 tooling machines and 51 assembly lines, we are able to produce 200,000 pieces per day. Our innate pursuit for innovation and observance of technical regulations is supported by the company certification ISO 9001: 2008. The company has always considered its focus on quality as the main tool to obtain significant business results: today ITAP SpA is proud to offer products bearing the approval of numerous international certifying bodies.





VX-N FITTINGS FOR
POLYETHYLENE
PIPES

SUITABLE FOR THE USE
WITH HIGH AND LOW
DENSITY POLYETHYLENE
PIPES.

710

STRAIGHT FEMALE CONNECTOR



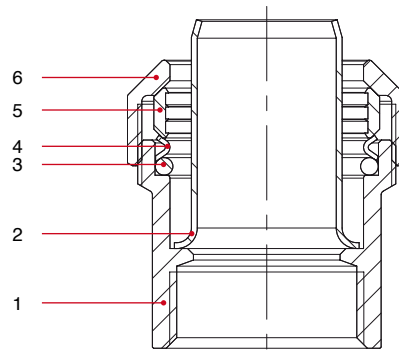
SIZE	CODE	PACKING
1/2"x20	7100012020	20/320
3/4"x25	7100034025	15/240
1"x32	7100100032	12/120
1"1/4x40	7100114040	6/108

TECHNICAL SPECIFICATIONS

Minimum and maximum working temperatures: -20°C, 110°C (in absence of steam).
Nominal pressure: 25bar.

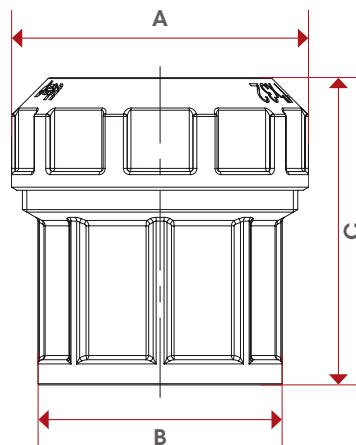
Threads: ISO228 (equivalent to DIN EN ISO 228 and BS EN ISO 228).

MATERIALS



POS.	DESCRIPTION	N.	MATERIAL
1	Body	1	Brass CW617N
2	Liner	1	Stainless steel AISI 304
3	O-Ring	1	Elastomer
4	O-Ring pushing washer	1	Stainless steel AISI 304
5	Fastening ring	1	Brass CW617N
6	Ring nut	1	Brass CW617N

OVERALL DIMENSIONS



	1/2"X20	3/4"X25	1"X32	1"1/4X40
A	32	38	47,5	58
B	26	32	39	48
C	36,5	42,5	49	56

CERTIFICATIONS



715

STRAIGHT MALE CONNECTOR



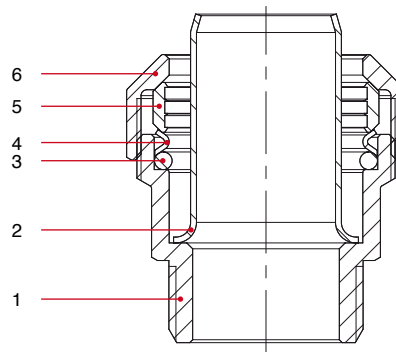
SIZE	CODE	PACKING
1/2"x20	7150012020	20/320
3/4"x25	7150034025	15/240
1"x32	7150100032	12/120
1"1/4x40	7150114040	6/60

TECHNICAL SPECIFICATIONS

Minimum and maximum working temperatures: -20°C, 110°C (in absence of steam).
Nominal pressure: 25bar.

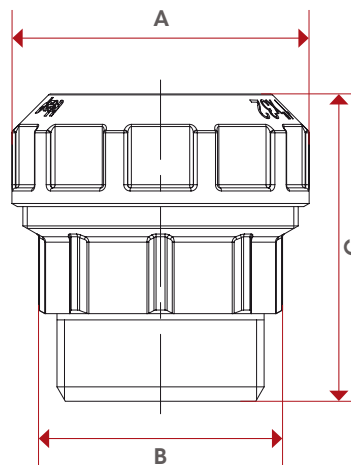
Threads: ISO228 (equivalent to DIN EN ISO 228 and BS EN ISO 228).

MATERIALS



POS.	DESCRIPTION	N.	MATERIAL
1	Body	1	Brass CW617N
2	Liner	1	Stainless steel AISI 304
3	O-Ring	1	Elastomer
4	O-Ring pushing washer	1	Stainless steel AISI 304
5	Fastening ring	1	Brass CW617N
6	Ring nut	1	Brass CW617N

OVERALL DIMENSIONS



	1/2"X20	3/4"X25	1"X32	1"1/4X40
A	32	38	47,5	58
B	26	32	39	48
C	38	41	49	56

CERTIFICATIONS



720

STRAIGHT COUPLING

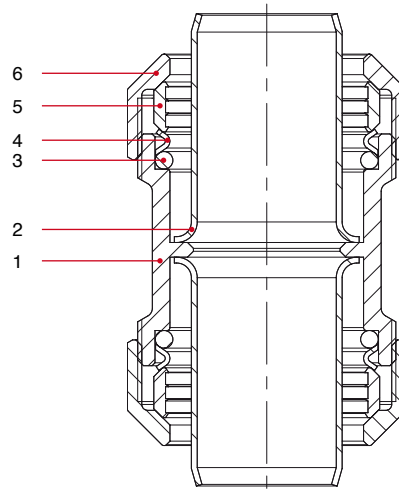


SIZE	CODE	PACKING
20	7200012020	12/288
25	7200034025	10/160
32	7200100032	8/104
40	7200114040	4/72

TECHNICAL SPECIFICATIONS

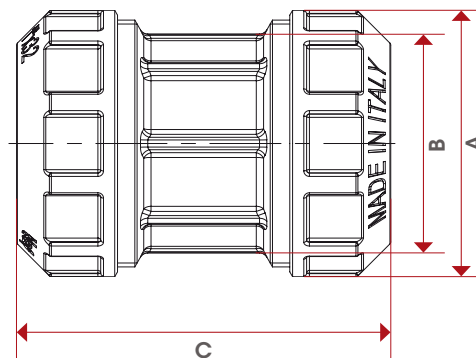
Minimum and maximum working temperatures: -20°C, 110°C (in absence of steam).
Nominal pressure: 25bar.

MATERIALS



POS.	DESCRIPTION	N.	MATERIAL
1	Body	1	Brass CW617N
2	Liner	2	Stainless steel AISI 304
3	O-Ring	2	Elastomer
4	O-Ring pushing washer	2	Stainless steel AISI 304
5	Fastening ring	2	Brass CW617N
6	Ring nut	2	Brass CW617N

OVERALL DIMENSIONS



	1/2"X20	3/4"X25	1"X32	1"1/4X40
A	32	38	47,5	58
B	26	32	39	48
C	46,5	55	67	75

CERTIFICATIONS



730

EQUALT COUPLING

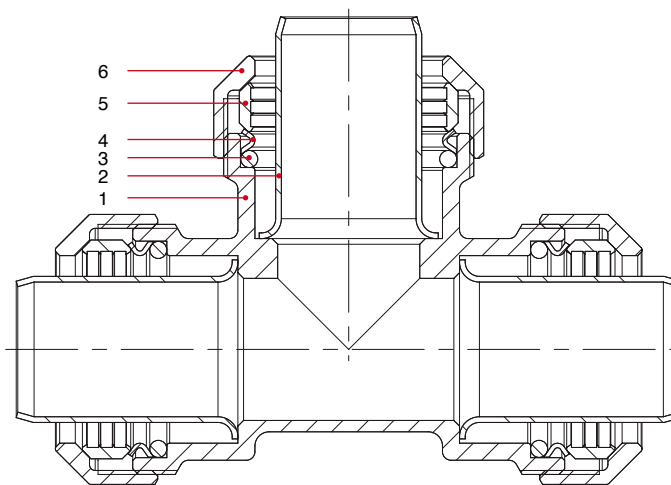


SIZE	CODE	PACKING
20	7300012020	6/144
25	7300034025	6/108
32	7300100032	4/52
40	7300114040	4/36

TECHNICAL SPECIFICATIONS

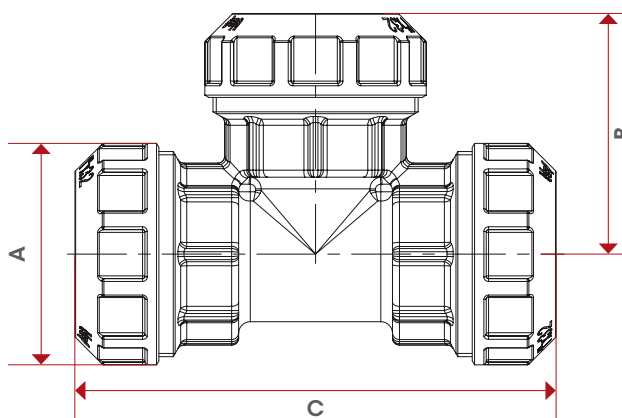
Minimum and maximum working temperatures: -20°C, 110°C (in absence of steam).
Nominal pressure: 25bar.

MATERIALS



POS.	DESCRIPTION	N.	MATERIAL
1	Body	1	Brass CW617N
2	Liner	3	Stainless steel AISI 304
3	O-Ring	3	Elastomer
4	O-Ring pushing washer	3	Stainless steel AISI 304
5	Fastening ring	3	Brass CW617N
6	Ring nut	3	Brass CW617N

OVERALL DIMENSIONS



	1/2"X20	3/4"X25	1"X32	1"1/4X40
A	32	38	47,5	58
B	35	41,5	51,5	59,5
C	70	83	103	119

CERTIFICATIONS



735

FEMALE BRANCHT COUPLING



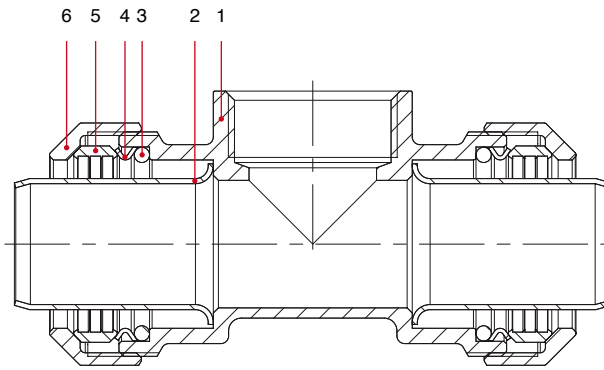
SIZE	CODE	PACKING
1/2"x20	7350012020	8/192
3/4"x25	7350034025	6/144
1"x32	7350100032	4/72
1"1/4x40	7350114040	4/48

TECHNICAL SPECIFICATIONS

Minimum and maximum working temperatures: -20°C, 110°C (in absence of steam).
Nominal pressure: 25bar.

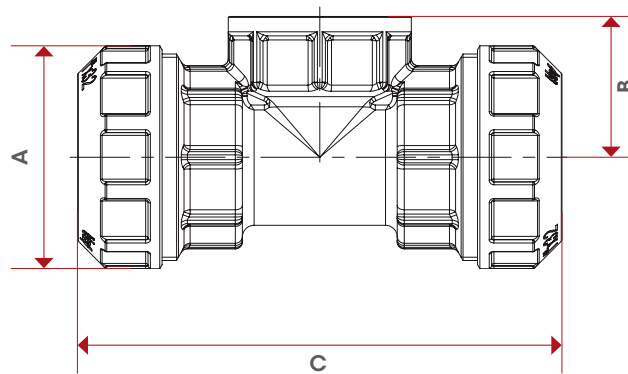
Threads: ISO228 (equivalent to DIN EN ISO 228 and BS EN ISO 228).

MATERIALS



POS.	DESCRIPTION	N.	MATERIAL
1	Body	1	Brass CW617N
2	Liner	2	Stainless steel AISI 304
3	O-Ring	2	Elastomer
4	O-Ring pushing washer	2	Stainless steel AISI 304
5	Fastening ring	2	Brass CW617N
6	Ring nut	2	Brass CW617N

OVERALL DIMENSIONS



	1/2"X20	3/4"X20	1"X32	1"1/4X40
A	32	38	47,5	58
B	22	26	30	37
C	70,5	83	103	119

CERTIFICATIONS



740

MALE ELBOW



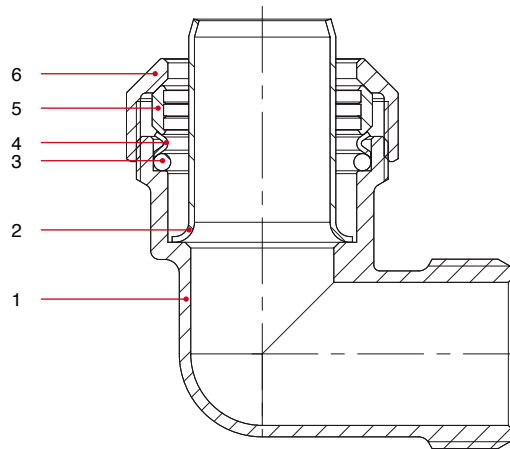
SIZE	CODE	PACKING
1/2"x20	7400012020	15/240
3/4"x25	7400034025	12/192
1"x32	7400100032	8/80
1"1/4x40	7400114040	6/72

TECHNICAL SPECIFICATIONS

Minimum and maximum working temperatures: -20°C, 110°C (in absence of steam).
Nominal pressure: 25bar.

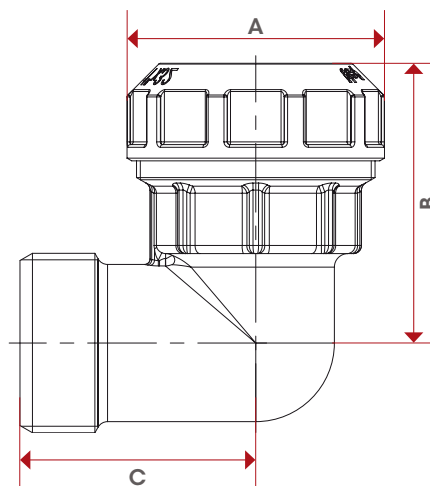
Threads: ISO228 (equivalent to DIN EN ISO 228 and BS EN ISO 228).

MATERIALS



POS.	DESCRIPTION	N.	MATERIAL
1	Body	1	Brass CW617N
2	Liner	1	Stainless steel AISI 304
3	O-Ring	1	Elastomer
4	O-Ring pushing washer	1	Stainless steel AISI 304
5	Fastening ring	1	Brass CW617N
6	Ring nut	1	Brass CW617N

OVERALL DIMENSIONS



	1/2"x20	3/4"x25	1"x32	1"1/4x40
A	32	38	47,5	58
B	35	41,5	51,5	59,5
C	31	37	43,5	50

CERTIFICATIONS



745

FEMALE ELBOW



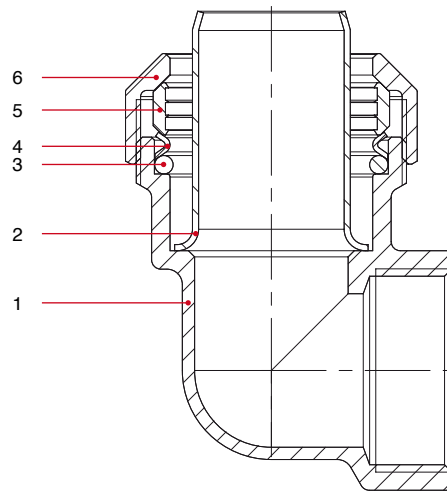
SIZE	CODE	PACKING
1/2"x20	7450012020	15/240
3/4"x25	7450034025	12/192
1"x32	7450100032	8/104
1"1/4x40	7450114040	6/72

TECHNICAL SPECIFICATIONS

Minimum and maximum working temperatures: -20°C, 110°C (in absence of steam).
Nominal pressure: 25bar.

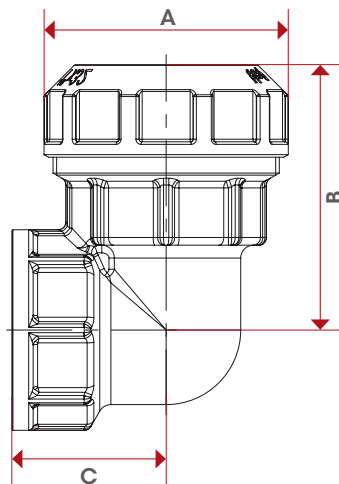
Threads: ISO228 (equivalent to DIN EN ISO 228 and BS EN ISO 228).

MATERIALS



POS.	DESCRIPTION	N.	MATERIAL
1	Body	1	Brass CW617N
2	Liner	1	Stainless steel AISI 304
3	O-Ring	1	Elastomer
4	O-Ring pushing washer	1	Stainless steel AISI 304
5	Fastening ring	1	Brass CW617N
6	Ring nut	1	Brass CW617N

OVERALL DIMENSIONS



	1/2"X20	3/4"X25	1"X32	1"1/4X40
A	32	38	47,5	58
B	35	41,5	51,5	59,5
C	22	26	30	37

CERTIFICATIONS



750

ELBOW COUPLING

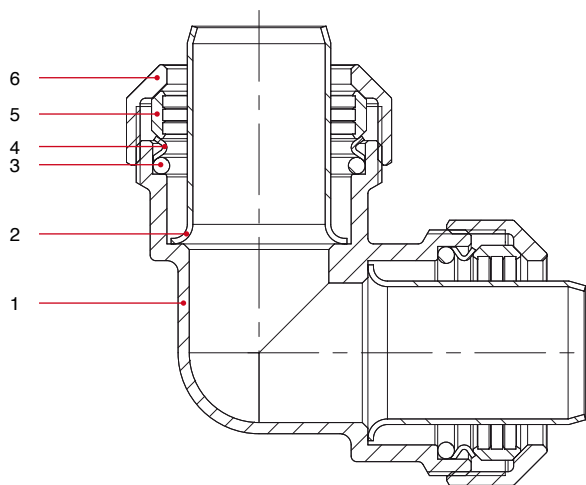


SIZE	CODE	PACKING
20	7500012020	12/216
25	7500034025	10/100
32	7500100032	6/78
40	7500114040	4/48

TECHNICAL SPECIFICATIONS

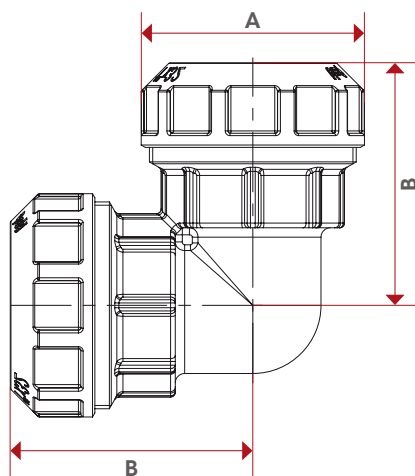
Minimum and maximum working temperatures: -20°C, 110°C (in absence of steam).
Nominal pressure: 25bar.

MATERIALS



POS.	DESCRIPTION	N.	MATERIAL
1	Body	1	Brass CW617N
2	Liner	2	Stainless steel AISI 304
3	O-Ring	2	Elastomer
4	O-Ring pushing washer	2	Stainless steel AISI 304
5	Fastening ring	2	Brass CW617N
6	Ring nut	2	Brass CW617N

OVERALL DIMENSIONS



	1/2"X20	3/4"X25	1"X32	1"1/4X40
A	32	38	47,5	58
B	35	41,5	51,5	59,5

CERTIFICATIONS



055

STAINLESS STEEL LINER

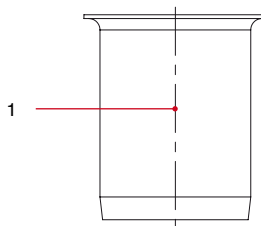


SIZE	CODE	PACKING
20	0550012020	100/2400
25	0550034025	75/975
32	0550100032	50/650
40	0550114040	30/420

TECHNICAL SPECIFICATIONS

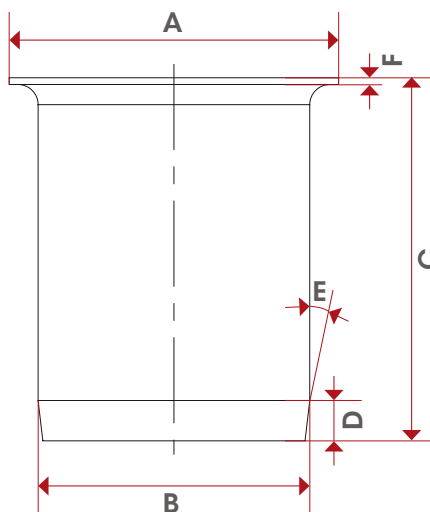
Liner in stainless steel AISI 304, whose purpose is to structurally strengthen polyethylene pipes that are used with pipe of S5 series. To use exclusively with VX and VX-N fittings.

MATERIALS



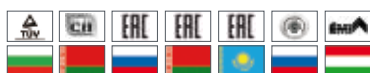
POS.	DESCRIPTION	N.	MATERIAL
1	Liner	1	Stainless steel AISI 304

OVERALL DIMENSIONS



	1/2"x20	3/4"x25	1"x32	1 1/4"x40
DN	15	20	25	32
A	18	24	31,5	39
B	13,7	18,7	25,7	32,2
C	31	36	39	48
D	3	3	3	6
E	15,8°	15,8°	15,8°	10,4°
F	1	1	1	1

CERTIFICATIONS



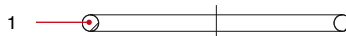
056

O-RING FOR VX AND VX-N FITTINGS



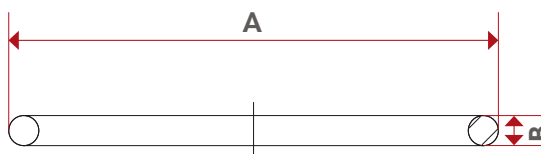
SIZE	CODE	PACKING
20	0560012020	1/0
25	0560034025	1/0
32	0560100032	1/0
40	0560114040	1/0

MATERIALS



POS.	DESCRIPTION	N.	MATERIAL
1	O-Ring	1	Elastomer

OVERALL DIMENSIONS



	1/2"x20	3/4"x25	1"x32	1"1/4x40
DN	15	20	25	32
A	20	25	32	39,69
B	2,25	2,5	3	3,5



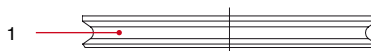
057

O-RING PUSHING WASHER FOR VX AND VX-N FITTINGS



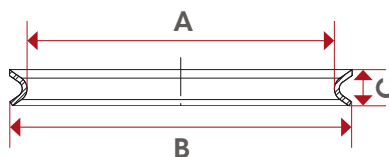
SIZE	CODE	PACKING
20	0570012020	1/0
25	0570034025	1/0
32	0570100032	1/0
40	0570114040	1/0

MATERIALS



POS.	DESCRIPTION	N.	MATERIAL
1	O-Ring pushing washer	1	Stainless steel AISI 304

OVERALL DIMENSIONS



	1/2"x20	3/4"x25	1"x32	1"1/4x40
DN	15	20	25	32
A	20,5	26	33	41
B	23,9	29,9	37,9	46,9
C	3,5	2,5	4,5	5



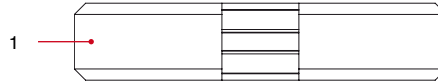
058

FASTENING RING
FOR VX AND
VX-N FITTINGS



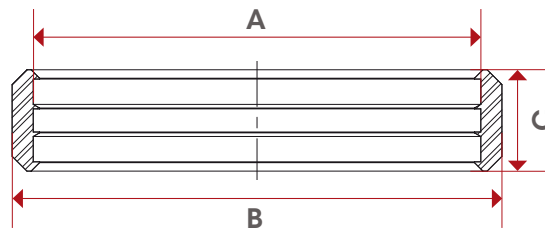
SIZE	CODE	PACKING
20	0580012020	1/0
25	0580034025	1/0
32	0580100032	1/0
40	0580114040	1/0

MATERIALS



POS.	DESCRIPTION	N.	MATERIAL
1	Fastening ring	1	Brass CW617N

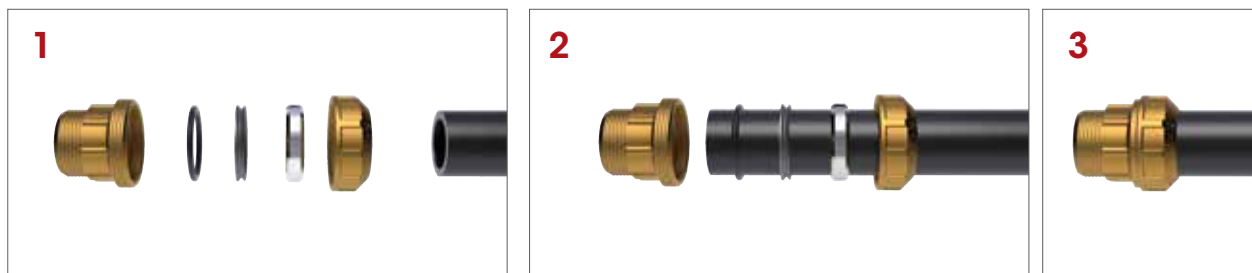
OVERALL DIMENSIONS



	1/2"x20	3/4"x25	1"x32	1"1/4x40
DN	15	20	25	32
A	21,5	26,5	33,5	41,5
B	25,5	31,5	38,5	48
C	6,5	7,5	8,5	10



INSTALLATION





NOTES

A series of horizontal dashed lines for taking notes, spanning the width of the page below the 'NOTES' header.



ITAP S.p.A.
Via Ruca 19
25065 Lumezzane
Brescia (ITALIA)
Tel 030 89270
Fax 030 8921990
www.itap.it - info@itap.it